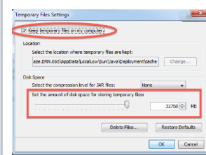


Connect to Collaborate with Windows

Minimum Windows System Requirements

- Java must be installed
 - with "Keep temporary Files on my computer" checked
 - at least 20MB of disk space allocated for temporary file storage
- Internet Explorer 9 or greater or another browser: Firefox 64-bit, Chrome, etc.
- At this time Edge is not supported

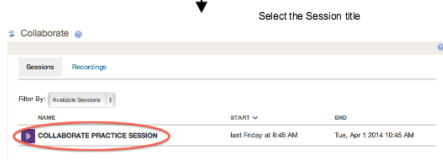


These settings available from the **Windows Control Panel > Java Control Panel > General Tab > Settings** button under Temporary Internet Files area

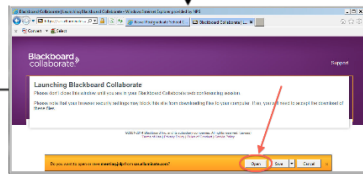
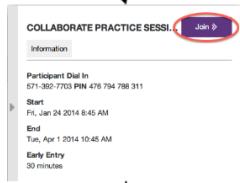
Connecting to a Collaborate session with Windows

Link Directly to a Session with a URL

Connect to a Session through Sakai CLE

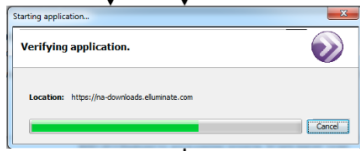


Select the Session title

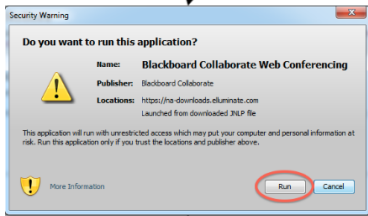


HTTP ERROR 401: UNAUTHORIZED

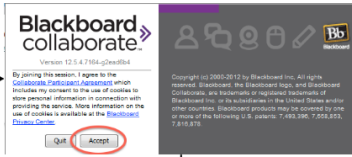
Windows can't open the file



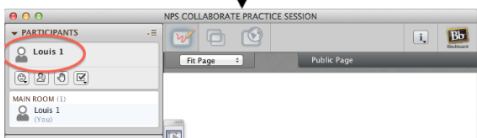
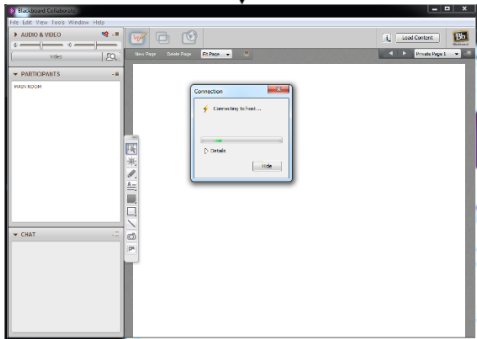
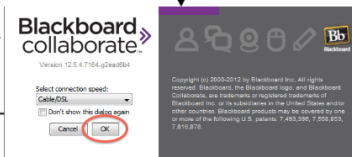
Unable to Launch Application



First Time Only



Cable/DSL Speed is typically good, change if your internet connection is different



AUDIO & VIDEO

Talk Video

CHAT - Supervised

- You joined the Main Room. (4:41 PM) -
- Your Chat permission has been enabled. (4:43 PM) -

The image shows a software interface window titled "AUDIO & VIDEO". At the top, there are icons for mute, video on/off, and a help icon. Below these are two buttons: "Talk" and "Video". Underneath the buttons is a chat window titled "CHAT - Supervised" which contains two messages: "- You joined the Main Room. (4:41 PM) -" and "- Your Chat permission has been enabled. (4:43 PM) -". To the right of the chat window is a vertical toolbar with icons for chat, mute, video, and other functions. The interface is rendered in a light gray, classic operating system style.